

## Electric equipment best solution for HS2 Euston

Well done to Steve Wright, Hemel Hempstead Service Manager, and James Barden, HS2 Project Manager, for innovation in supply to HS2 Euston Station.

With the Euston site being enclosed and very congested, the use of standard diesel machinery was proving problematic. Instead, the team needed a solution that produced less emissions and noise when in use. Steve and James ensured that a solution was provided, by organising the supply of fully electric alternatives such as electric tracked barrows, loading shovel, and mini excavators.

The use of electric equipment on site (as shown below) has been instrumental in lowering the carbon footprint, as well as reducing noise pollution and disruption. With environmental responsibility at



James Barden (left) and Steve Wright shown here with one of our electric tracked barrows.

the forefront of construction and design, the innovative approach to electric machinery is incredibly important for the future.

The hard work and forward thinking of Steve and James has ensured major success on this site.



## Lynch donates hi-viz jackets for Keep Britain Tidy clean up

Lynch was delighted to be able to help a clean up of the industrial estate in Rushden where our depot is located with the donation of several hi-vis jackets to Getronics.



## Lynch get the thumbs up on John Sisk project

Lynch continues to make good progress on the Northstowe infrastructure project to deliver 3,500 new build homes (phase two only).

Following the financial troubles of the previous supplier Lynch responded quickly to populate and service the site by supplying modern, environmentally friendly machines and employing existing site personnel to avoid redundancies.



Work has included demolition and remediation of old RAF sewage treatment facilities; remediation of surrounding areas and infrastructure development of 5km of roads. This has resulted in 20,000 man hours and 130 transport moves completed to date with zero accidents or reportable incidents to date.

John Sisk is extremely pleased with the integrated project management between the two companies and work carried out to date has enabled Sisk to win further phases of the project.

# LYNCH PEOPLE MEETING HIRE DEMANDS

## A14 injury free environment innovation rewarded

Congratulations to Chris Kent for his fantastic contribution to injury free environment innovation on the A14 Project.

Chris' work has ensured that workers and visitors alike are kept safe whilst on site.

Here, Chris Gill (head of Key Accounts) is pictured presenting Chris Kent with a £250 Red Letter Day voucher.



## Customer thinks our driver is the bees knees!

Congratulations to Hemel Hempstead Hiab driver Norman Bee who has received glowing praise for his 'can do' attitude while working for Triio.

Francesca Davies, Property & Facilities Lead at the company said, "While all your drivers were good, one driver in particular, Norman, excelled in my eyes. We had him every day and not only was he very good at his job, he went over and above my expectations. A hard worker and a credit to your company".



## Over £1,000 raised for children's special needs charity Play Skill

On the 3rd April Lynch held a cake sale for Play Skill, an amazing charity which helps children with special physical needs.

Both Stanmore and Rushden depots held an event on the day to raise money to help Play Skill continue its vital work.

£1,088.34 has been raised from the sale of raffle tickets, 'guess the sweet jar' and cake donations. Well done to everyone who took part and raised an impressive amount for such a worthy cause.

## Sharp by name, sharp by nature

Since Ben Sharp has been with Lynch he has shown a willingness to learn and, due to his work ethic and friendly approach, has earned the respect of everyone with whom he comes into contact. For a man of relatively few years he is a credit to the IT team and no doubt has a great future with us.

Here Ben is being congratulated by Andy Vincent, Head of IT.



## Do you know an extra special colleague?

Do you work with or alongside a member of the Lynch team who is always going that extra mile and meeting hire demands? Nominate them for a reward by sending their name and special quality to [merrill@l-lynch.com](mailto:merrill@l-lynch.com)

## A big welcome to our new staff members

### Ben Sharp

Ben joined us at the beginning of this year as a trainee IT support technician, without any formal IT training. Having only left school last year, he has made a great impression at Lynch with his friendly and cheery 'can do' attitude and is picking up support issues quickly, becoming a valued member of the IT team.



### Christopher Rice

Christopher joins us as Workshop Foreman, Hemel Hempstead. Chris is a great asset to the Service Department bringing many years of hands on experience to the role.



### Alex Thomas

Lynch would like to welcome Alex who recently joined the business as Operated Contracts Manager working alongside the current team on the A14.



Alex has 25 years experience in Plant Hire and Earthworks, and is looking after the Lynch operators and equipment on hire to C A Blackwell on the A14 project.

It's great to have you onboard!

### Larissa Solis

When I first started working at Lynch, it was quite challenging given the fact I come from Nicaragua, Central America. A country that not many know about. I have now been working in the Purchase Ledger department for 6 months and already feel part of the Lynch family. I am lucky to be part of such a supportive team.



# LYNCH LEADER

Your regular newsletter from L-Lynch Plant Hire & Haulage  
May 2019

## Lynch rolls out new Injury Free Environment workshops

Lynch is committed to cultivating an Injury Free Environment (IFE) on all of its sites and will roll out a number of workshops over the next few months to inspire workers and change their attitudes to health and safety regulations.



Special thanks to Chris Kent (Foreman at Lynch shown on left) & Chris Grove (Skanska) for delivering such a thought provoking and powerful session.

Significant progress has already been made in terms of making construction sites safer places to work, particularly over the last few years with the introduction of new machine technology supported by robust systems, all of which has helped to encourage safer working practices. However, to reach our business goal of zero health and safety incidents, it is Lynch's objective to ensure the well-worn phrase of 'accidents will happen' is totally eradicated from site philosophy. Lynch believes all on site incidents and injuries are preventable, which is why, to complement its 'thumbs up' for safety campaign, it is launching a number of IFE workshops around the country. Compulsory for all

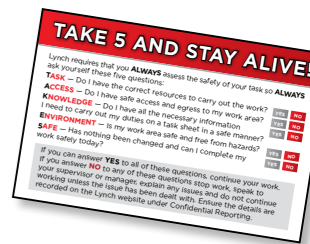
its operators to attend, the workshops are designed to create a mindset that will challenge operators to take ownership of both their own and their co-workers' actions. The workshops will be instrumental in helping to change behaviour and attitudes to make us all act and think differently about safety.



Everyone has the right to go home safely at the end of each day and one of the key objectives of the workshop is to empower the worker to stop work if they consider the action or job to be unsafe in any way.

Lynch's latest IFE workshop, held at our Hemel office, was attended by over 30 operators and was considered a great success. One of the discussions that really hit a nerve with the operators was the sudden realisation of the high value placed on their own life, not so much by themselves but by their families and loved ones. It was something that up until that point they had never really given much thought to. Therefore, to reinforce the importance of their well-being and ensure that safe behavior is observed at all times, every operator employed by Lynch will be issued with a plastic safety card aptly headed, 'Take Five and Stay Alive'.

Lynch is proud of its commitment to cultivating an injury-free environment, as a company as well as individuals, and will look to work with other companies to achieve its goal of an injury-free environment throughout the construction industry.





# Lynch's 'exceptional performance' rewarded with certificate from the CSJV



Congratulations to all those involved in supplying exceptional plant and operators for HS2 Enabling works. Our achievement was recognised by the CSJV who awarded Lynch with a certificate for exceptional performance.

Like the CSJV all of us here at Lynch should consider this a great achievement especially in recognition of our innovative work currently being carried out at Euston.

## Safety training featured in the press

Lynch's Smart Training programme, in conjunction with The Kier Group for the M23 Smart motorway project, was featured in the February issue of *Construction Plant News*.

Given the high incidence of accidents within the UK construction industry involving site workers being struck and/or crushed by moving machinery, Lynch and Kier have been working closely together to alert the M23 smart motorway construction team to these potentially deadly risks. With some 25 excavators on hire on the prominent M23 smart motorway project contract near Gatwick Airport, the importance Lynch places on providing site personnel

with practical safety training was the subject of a special report in the trade magazine.

The full article can be found on our website [www.l-lynch.com](http://www.l-lynch.com) under the press heading within the resources section.



## Lynch orders first 707G Hydrema in the UK...

Director Rob Lynch and Head of Key accounts Chris Gill spent a couple of productive days in Munich at the Bauma show, one of the leading construction trade fairs in the world. We are pleased to report that apart from other orders placed Lynch is the first UK company to order the new Hydrema 707G Dump truck which offers all the benefits of a larger rear tip ADT but with the compact size of a traditional site dumper as well as highly specified safety features.

Rob Lynch is pictured here confirming the order with Tim Wadsworth from Hydrema (pictured below).



## Women in construction

Following on from our article in December's issue about Tina Wiseman, we caught up with Lynch's Diana Hodges, a farmer's daughter, to find out how she also became involved in the construction industry.

Being a farmer's daughter my machine background started as soon as I could reach the pedals of the tractor! Growing up in Long Marston, near Stratford Upon Avon, I worked on my family's farm off and on through school and college then took a year out travelling. When I got back a gas pipeline was being run through a few of our fields so I got a job on a pay welding rig and tractor for the summer. Having passed a course for an excavator, JCB 3X and FTD in 2002, my future in this industry was forged and I've been operating heavy plant ever since.

I've worked with crushers and screeners driving a loading shovel, and on 360s. I've also worked on contracts in building sites, quarries, large landscaping projects, new road



Diana Hodges with Tom Law, Operated Contracts Manager.

builds, remediation and even spent three years in Australia operating an 80 tonne reach stacker in a container yard!

**“ I would definitely recommend this industry – I absolutely love my job and wouldn't do anything else. ”**

Every day I come away with a sense of achievement and I'm proud of the level of standard I aim for every day... it wouldn't be worth it otherwise. New challenges arise every day and even the job you were doing the day before can change significantly over night through a change in the weather. Health and safety has had a massive and positive impact over the years too – there's a few stories I could tell you which, compared to how things are today, would make your hair stand on end!

I've been working for Lynch for over a year now and am very happy and impressed with this company. From meeting and working with fellow operatives out on site, to conversations with colleagues in the office over the phone, everyone has been helpful, friendly and courteous.

## Over two decades of loyal service

Starting back in 1998 as a Saturday assistant, Aisha Aslam has been an integral part of the Lynch Team for over 20 years.



While studying for a Business Degree at Thames Valley University, Aisha progressed from Saturdays to a full time one year placement in 2000. During this time Aisha focused on dealing with the finances and invoicing of purchasing stock and assets, bringing her business acumen to the role with great success.

From 2001-2009 Aisha dealt with every aspect of accounts and finance, from stock purchasing and purchase ledger, to bank requisitions, wages and cash accounts. Aisha's ability to apply her business knowledge and unwavering drive and attention to detail, has ensured an incredibly successful career. Today, as well as assisting with every aspect of accounting, Aisha focuses on dealing with purchase ledger for all departments including Plant hire, Haulage, and Direct Solutions. This role also encompasses cash accounts which require constant control and attention to detail.

Congratulations to Aisha for forging such an impressive career! The directors and management team at Lynch would like to express their thanks for her long service.

## Lynch supporting International Women's Day

At Lynch we were very proud to acknowledge International Women's Day and some of our ladies based at our Hemel office were also only too happy to show their support... by standing in the cold and rain for a group photo!!

Only one in ten of the UK construction workforce is female with women making up only one per cent of the manual trades and the amount which make up machine operators barely registers. The future success of Lynch relies on recruiting good people whether they are male or female and

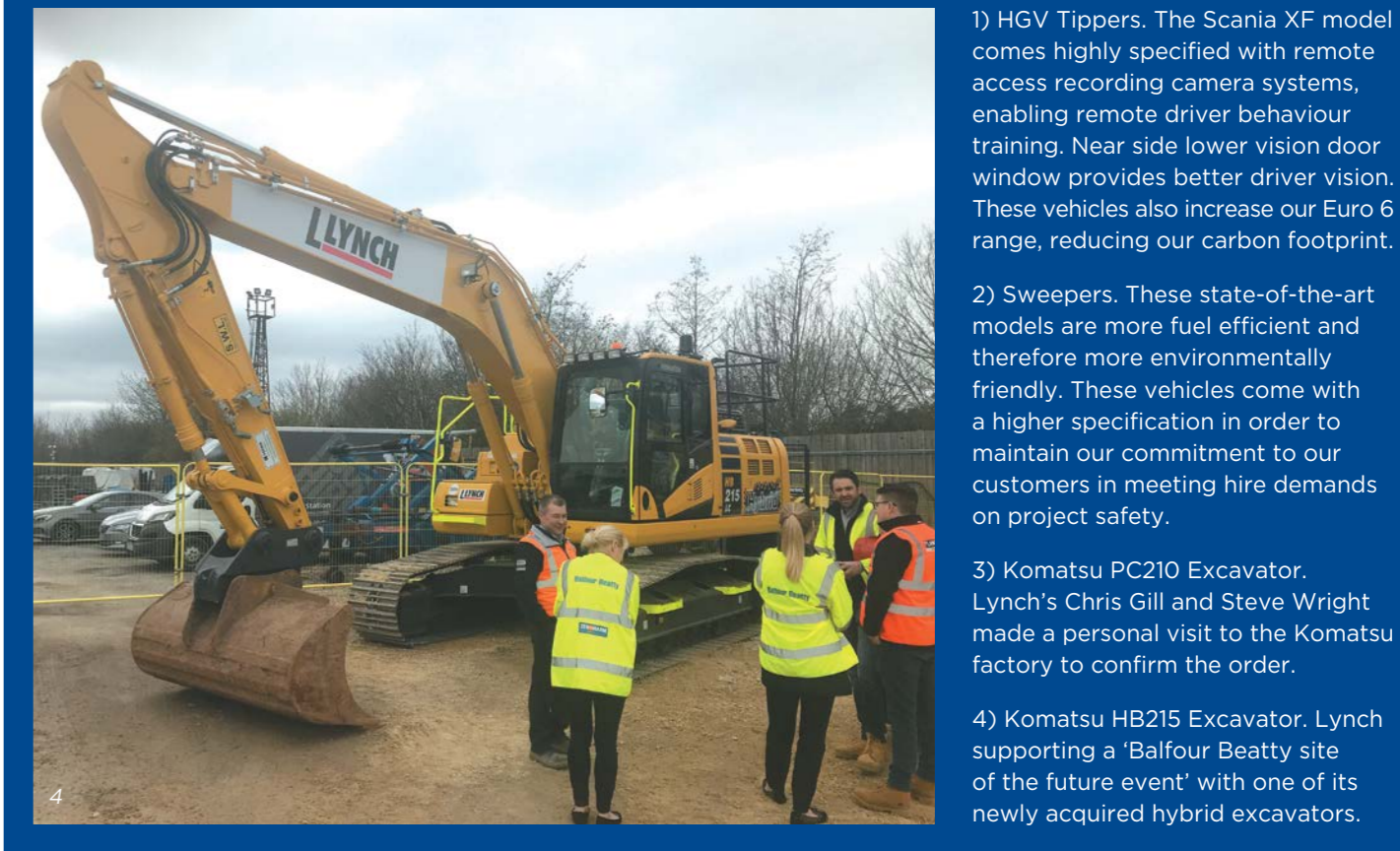
as a company, our priority is to try and make that pathway to a career in construction that much easier for both women and men of all ages. That's why we look to encourage

applications to our regular training and apprenticeship schemes from all parties interested in pursuing a career in construction. For more details contact [leigha@l-lynch.com](mailto:leigha@l-lynch.com).



## New additions to the Lynch fleet

Lynch have recently added a number of new highly specified machines to the fleet, including 8 wheel tippers, road sweepers and hybrid excavators.



1) HGV Tippers. The Scania XF model comes highly specified with remote access recording camera systems, enabling remote driver behaviour training. Near side lower vision door window provides better driver vision. These vehicles also increase our Euro 6 range, reducing our carbon footprint.

2) Sweepers. These state-of-the-art models are more fuel efficient and therefore more environmentally friendly. These vehicles come with a higher specification in order to maintain our commitment to our customers in meeting hire demands on project safety.

3) Komatsu PC210 Excavator. Lynch's Chris Gill and Steve Wright made a personal visit to the Komatsu factory to confirm the order.

4) Komatsu HB215 Excavator. Lynch supporting a 'Balfour Beatty site of the future event' with one of its newly acquired hybrid excavators.

## Lynch machines in action...



Lynch machines in action at HS2 Enabling works at Birmingham kindly supplied by Des Jones.